



AC-DC DIN Rail Power Supply AX/G-P100-24.1

Functional Description

- Smart Home Control
- Building Automation
- Industrial Control Systems
- Factory Automation
- Electromechanical Equipment

Characteristics

- Adjustable DC Output Voltage
- (SELV) Safety Extra-Low Voltage (SELV)
- Protections: Short-Circuit/ Overload (Short-Circuit Withstand) / Overvoltage
- Input Range: 198~264V AC
- Adjustable DC Output Voltage <math>< 0.3W</math>
- Operating Temperature: -20°C to $+70^{\circ}\text{C}$
- 3-Year Warranty

● Overview

AX/G-P100-24.1 is a high-efficiency DIN-rail power supply with a compact 4SU (72mm) faceplate width, delivering 4.2A output. It provides two simultaneously operating outputs rated at 100.4W total output power with up to 91% efficiency. Featuring an extended operating temperature range of -20 to $+70^{\circ}\text{C}$, this unit adapts to diverse application environments. An integrated LED power indicator displays operational status. Particularly suitable for home and building automation control systems.

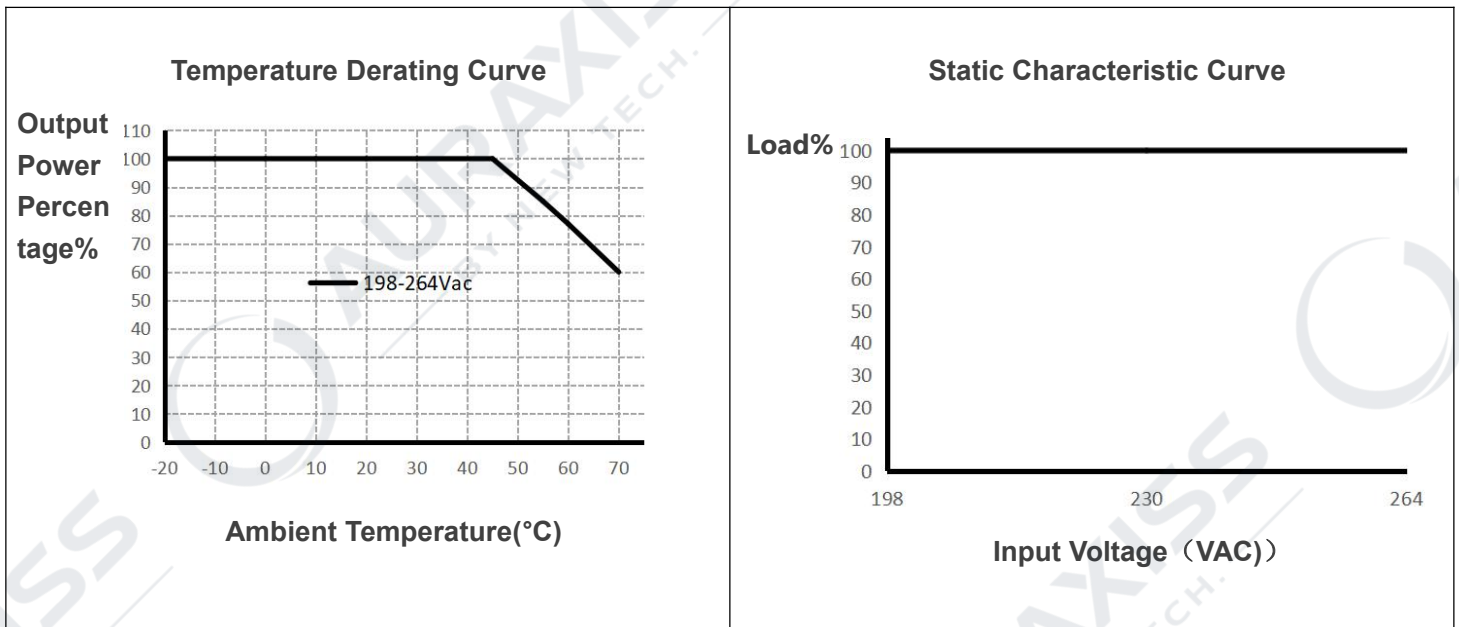
1. Parameters

Model		AX/G-P100-24.1
Input characteristics	AC Input	198~264VAC
	DC Input	280~370VDC
	Frequency Range	47~63HZ
	AC Current	<1.3A
	Standby Power Consumption	<0.3W
	Inrush Current	<60A(230VAC, full load)
	Typical Efficiency	91%(230VAC, full load)
Output characteristics	Output voltage	24VDC±5%
	Adjustable range of output voltage	21.6~29VDC±5%
	Rated Current	4.2A MAX
	Rated Power	100.8W
	Ripple and noise	200mVp-p (Ripple and noise measurement method: Connect 0.1μF and 47μF capacitors in parallel at the output terminals, and measure with a 20MHz bandwidth limit.)
	Startup/rise time	<0.5S(230VAC, full load)
	Line Regulation	1%
	Load Regulation	2%
	Power-off retention time	15mS(230VAC, full load)
	Overcurrent Protection	105% to 130% of rated output power; self-recoverable after overcurrent fault clearance
	Overvoltage Protection	30~35VDC
	Protection	Insulation voltage
Insulation resistance		>100MΩ @ 500VDC
Leakage current		I/P to O/P <5mA
Display	LED Display	Normal operation: The green light is always on
Environment	Ta/Operation Tempe	-20~+70°C (Refer to the derating curve)
	Ts/Storage Temp	-20 ~ +85°C
	Operating Humidity	10 ~ 95% RH Condensation-Free
	IP Grade	IP20
Safety and EMC Standards	Safety Standards	BS EN/EN62368-1
	EMC Emissions	CISPR22/EN55032
	EMC Immunity	CISPR22/EN55032
	Surge Immunity	L-N/2KV
Connection	Screw-type Terminal	0.5 – 4.0mm ² Solid Wire, 0.5 - 2.5mm ² Multi-strand Wire



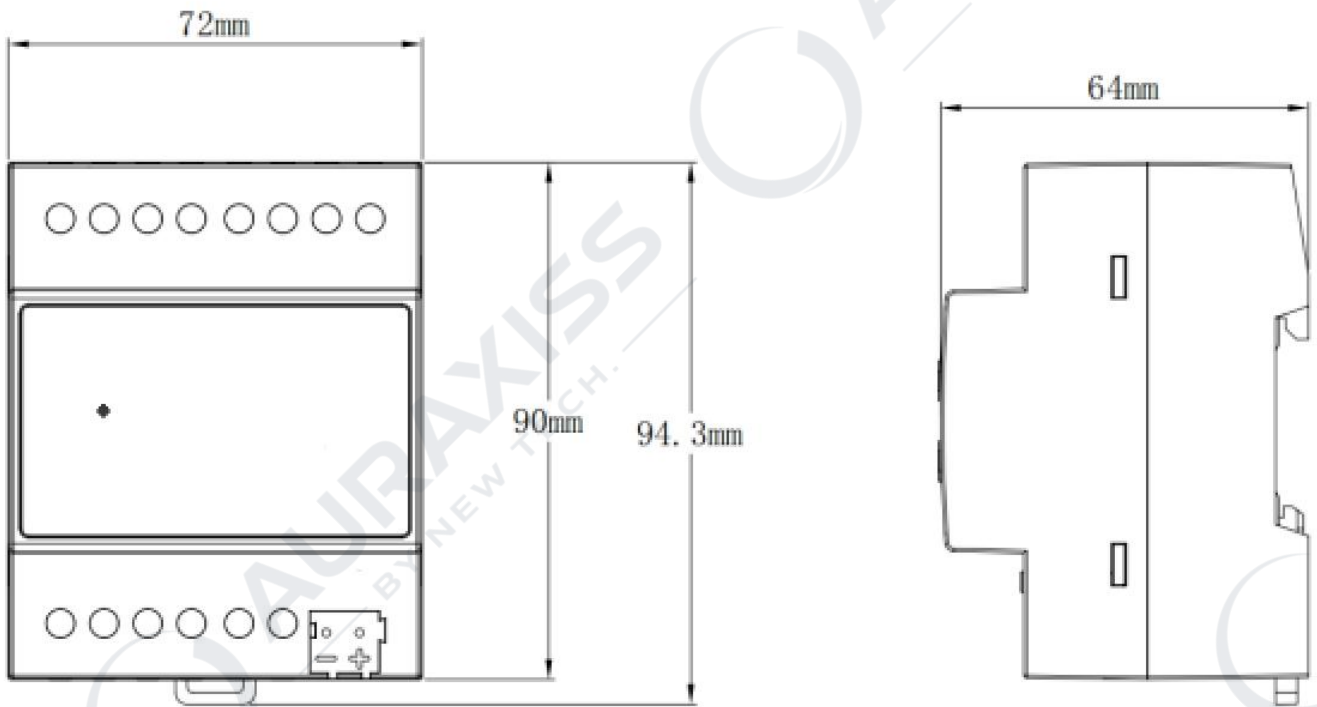
	Blocks	
	KNX Bus Terminal Block	72*90*64mm (W*H*D)
	Dimension	4SU
	Face Width	35mm DIN Rail Mounting
Remark	1. Unless otherwise specified, all specifications are measured at 230VAC input, rated load, and an ambient temperature of 25. 2. Provide the test report issued by a certific.	

2. Chart



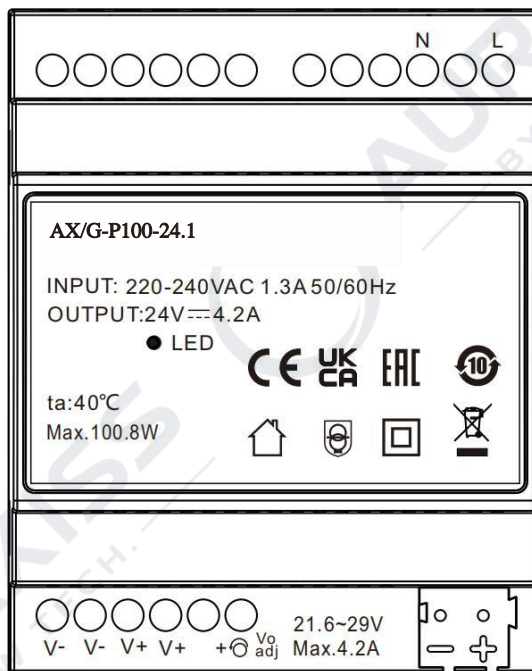
3. Dimension

AX/G-P100-24.1



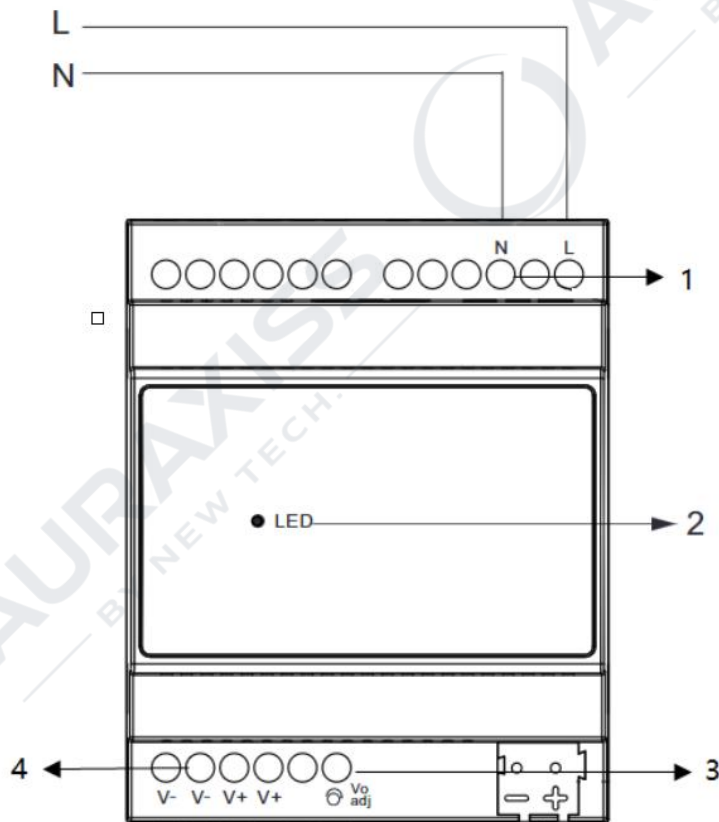
4. Label

AX/G-P100-24.1



5. Mounting Drawing

AX/G-P100-24.1



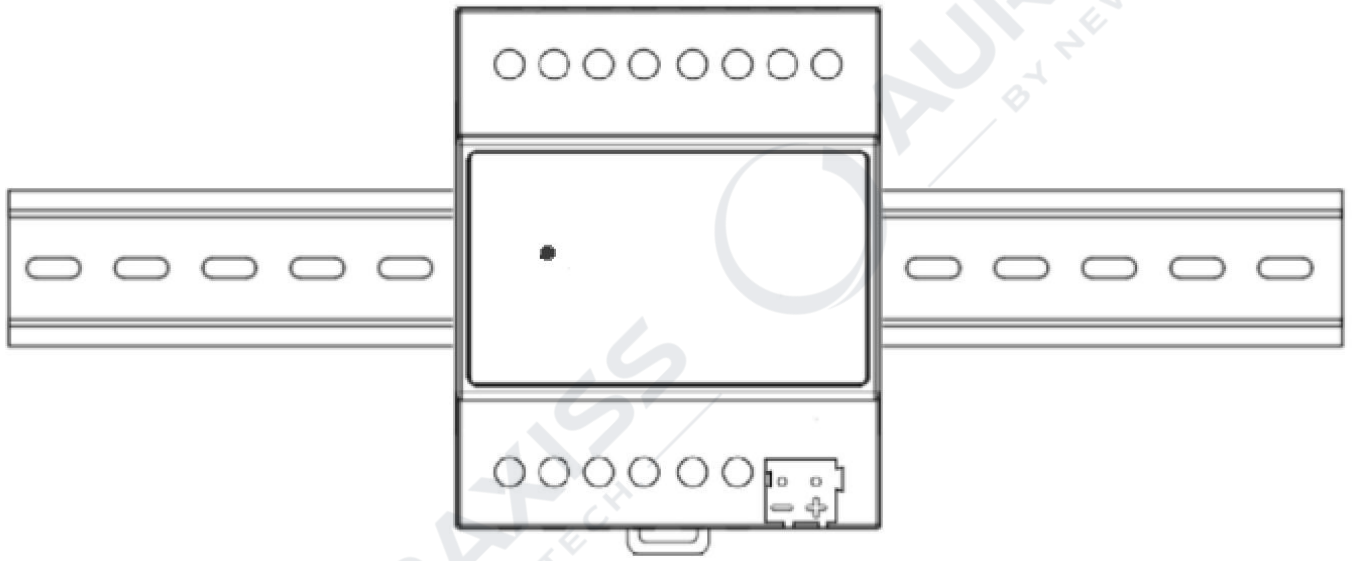
- 1、 Power input terminal
- 2、 LED indicator light
- 3、 Output Voltage Adjustment Potentiometer
- 4、 Power output terminal

6. Mounting Drawing

Step 1. Secure the DIN rail



Step 2. Press the entire module onto the rail and slide it to the desired position until it locks in place.



7. Revision History

DATE	REV	Modification details
2025-10-14	V1.0	Initial Release